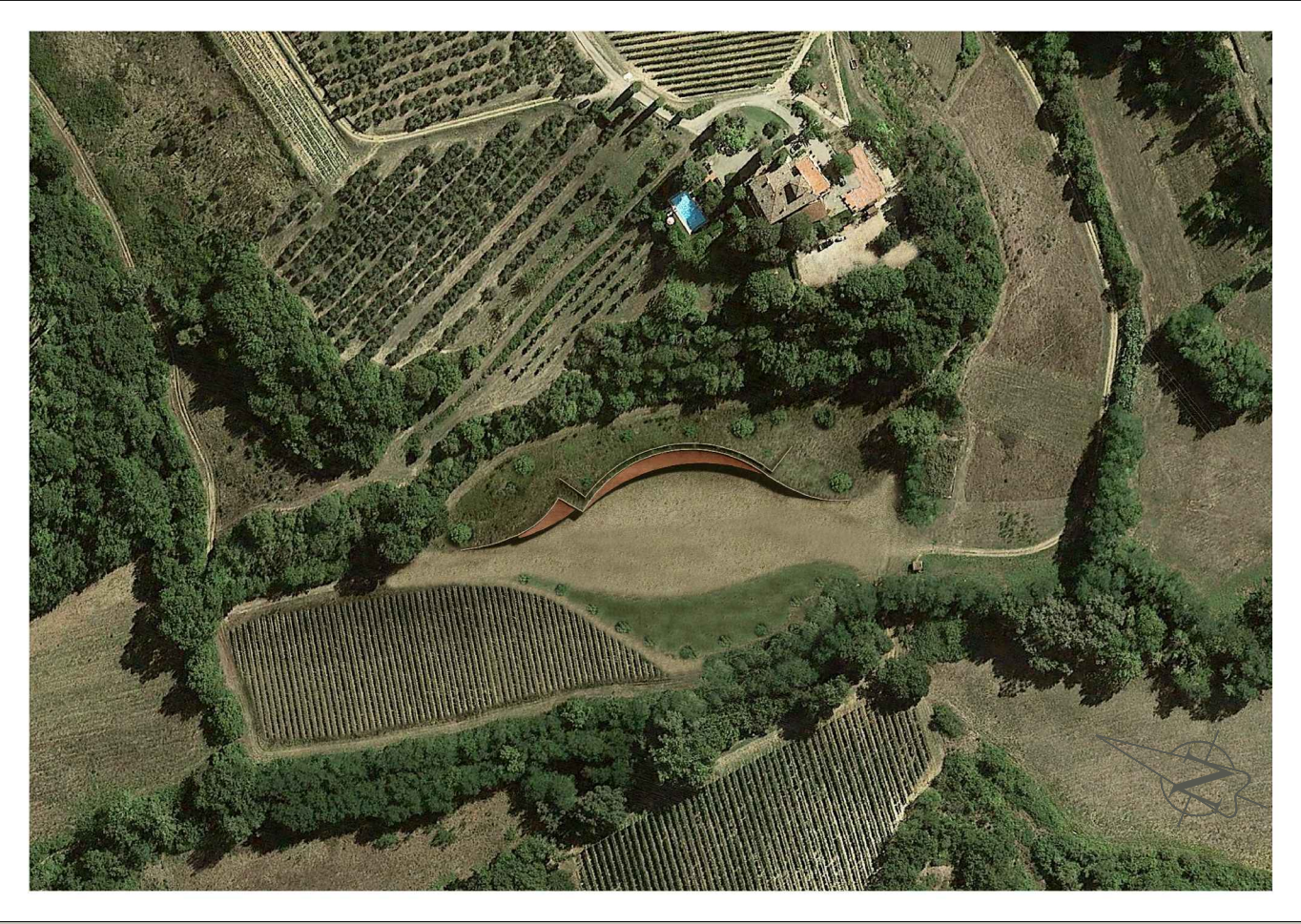


COMUNE DI TAVARNELLE VAL DI PESA

CITTA' METROPOLITANA DI FIRENZE

Azienda Agricola "POGGIO ROZZI" loc. Romita, Via Romita n° 29



Richiedente:"Azienda Agricola Poggio Rozzi di Eberhard Toggenburg"

Proprietario:dott. Ulrich Toggenburg

dott.agr. Michele Lotti Margotti

geom. Luca Anichin

dott. ing. Daniele Lapi

dott.geol. Maria Angela Botta

TAV.

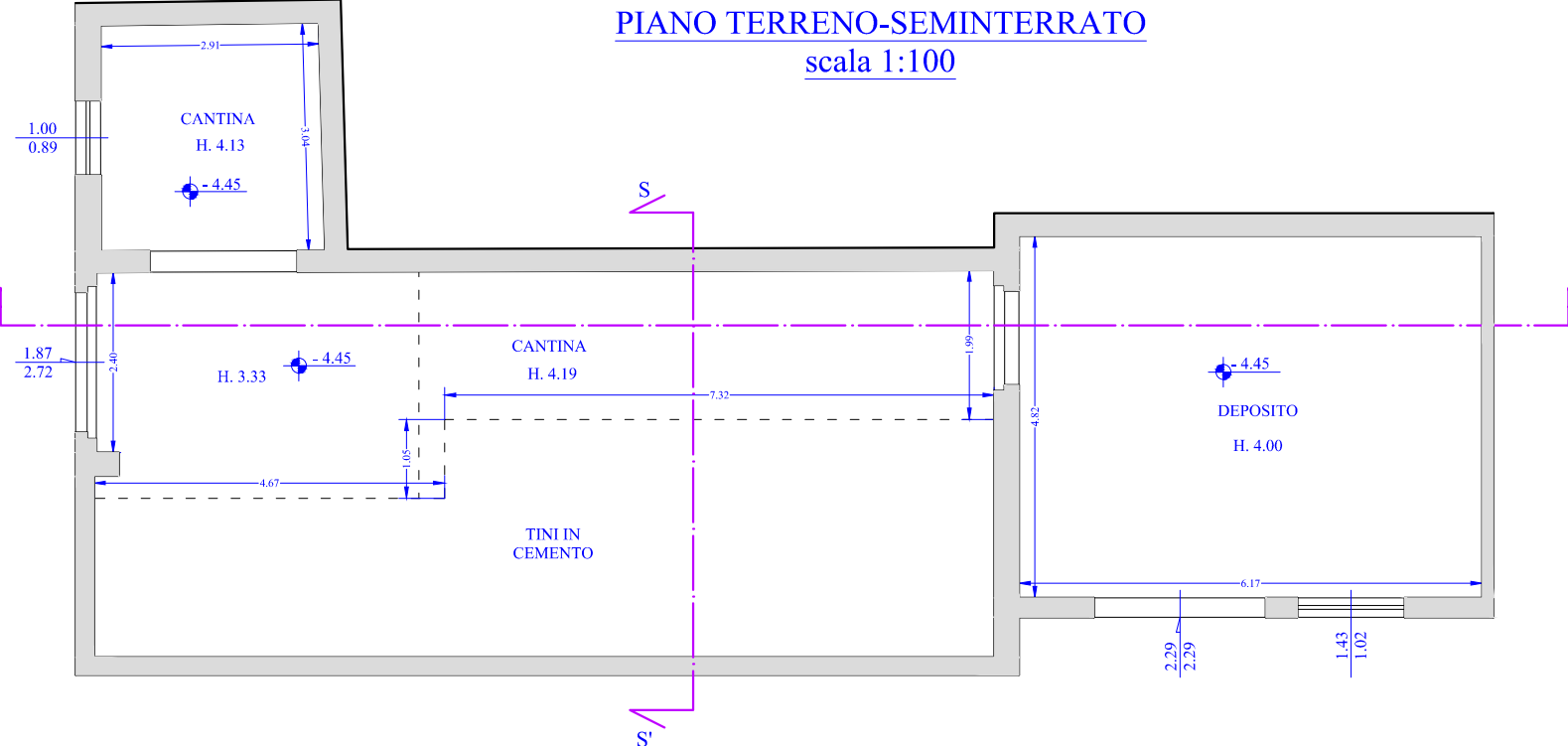
13.B

DICEMBRE '16

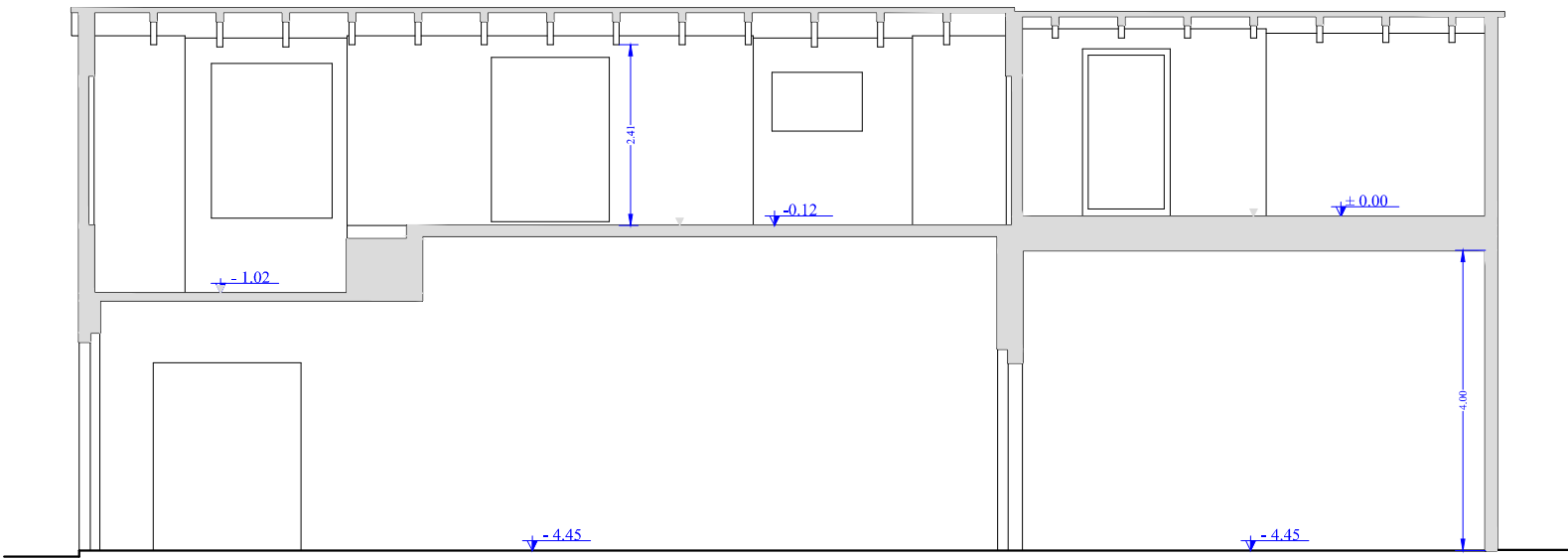
PIANTE, SEZIONI, CALCOLO VOLUME E SUP. UTILE

scala 1:100

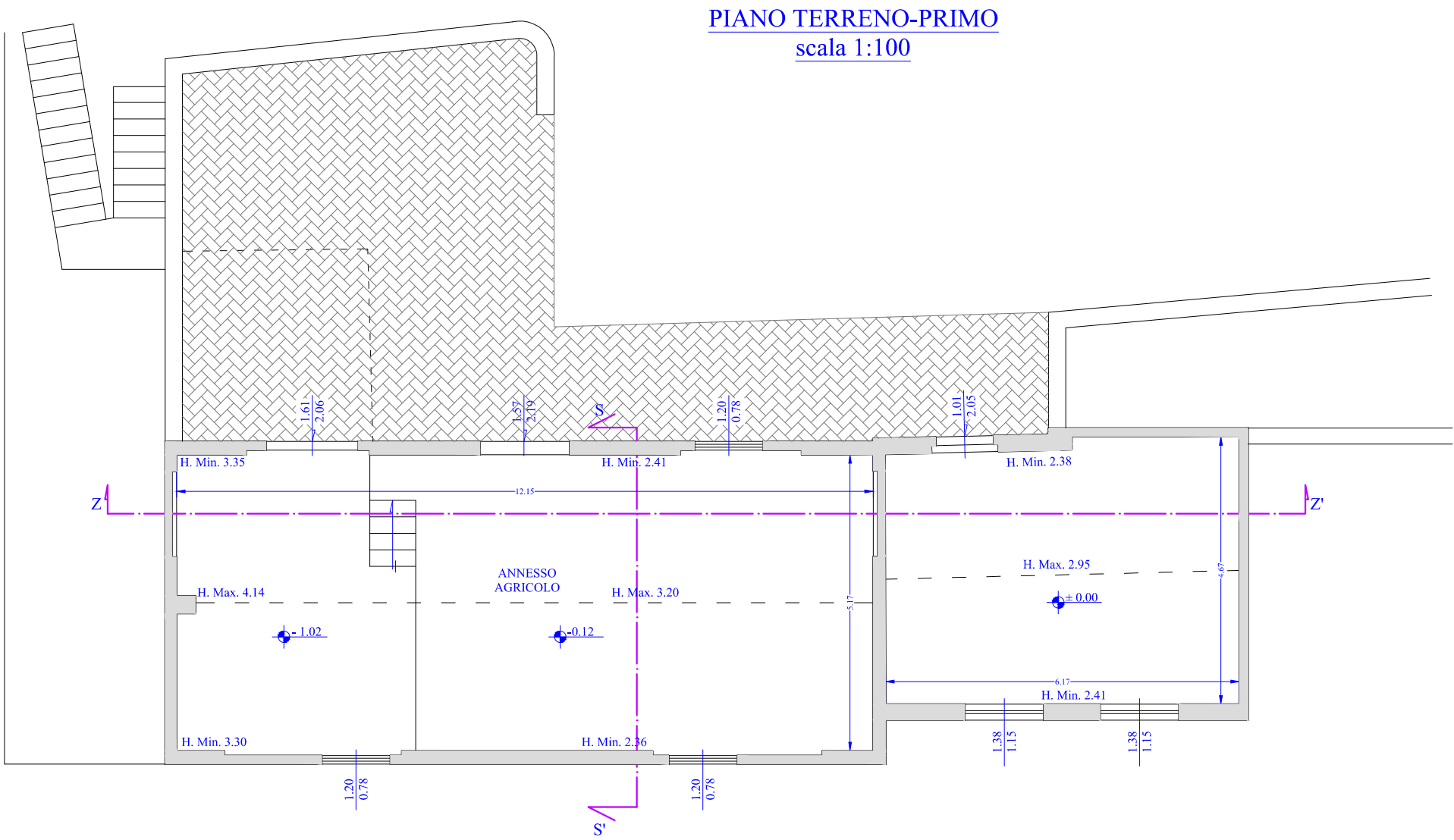
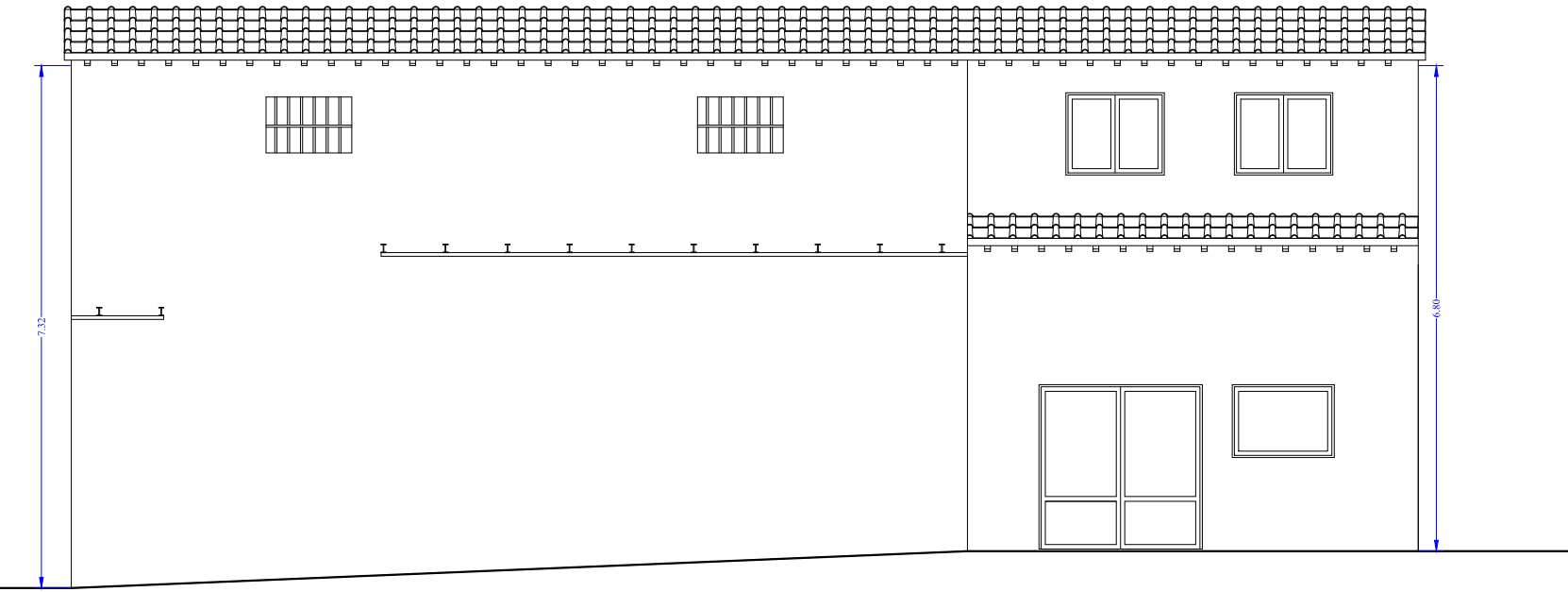
STATO ATTUALE



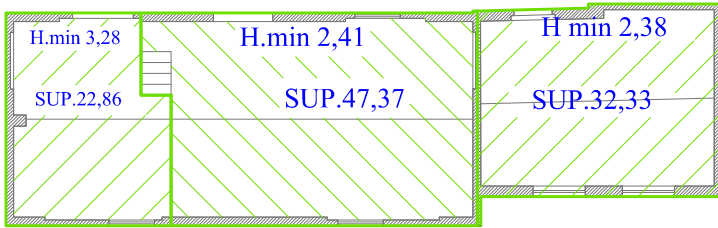
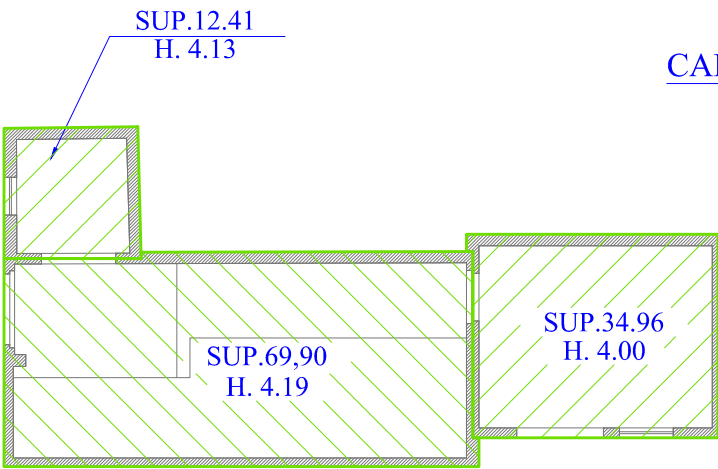
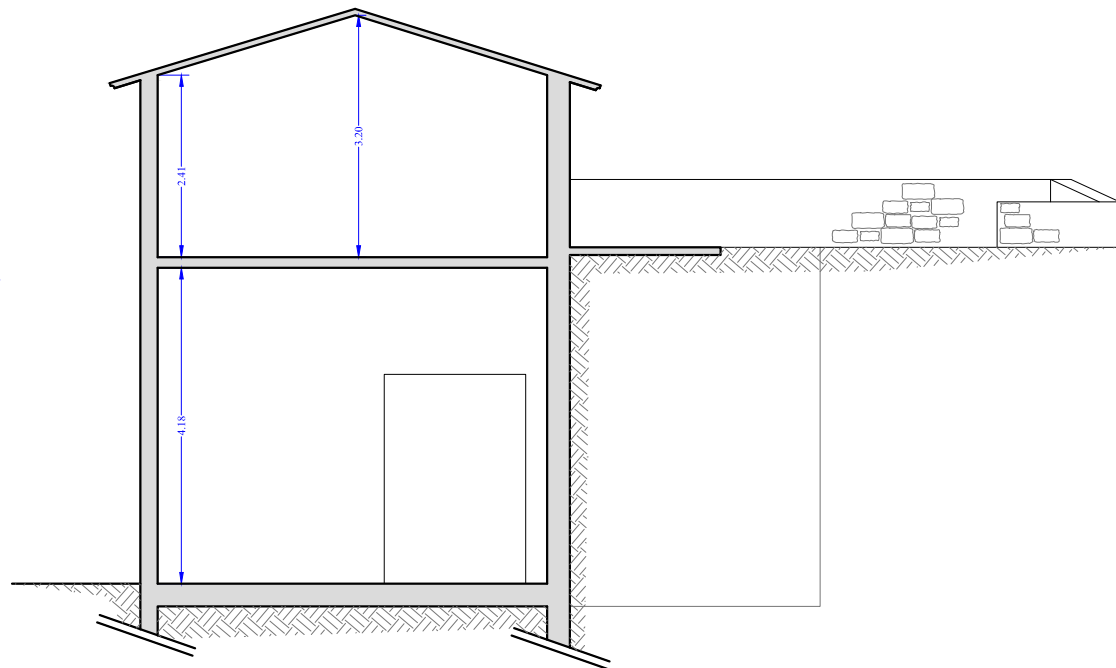
SEZIONE Z-Z'
scala 1:100



PROSPETTO FRONTALE
scala 1:100



SEZIONE S-S'
scala 1:100



CALCOLO VOLUME

CALCOLO VOLUME COME DA PAPMAA

SUP. UTILE PIANO SEMINT. =99.81 mq
SUP. COPERTA PIANO SEMINT. =117.28 mq
VOLUME = SUP,COPERTA X H.+0,30=
=(12.41 X (4.13+0.3)) + (69.90 X (4.19+0.3)) +(34.96 X (4.00+0.3))= 519.15 mc

SUP. UTILE PIANO TERRENO PRIMO =91.5 mq
SUP. COPERTA PIANO TERRENO PRIMO =102,56 mq
VOLUME = SUP,COPERTA X H.+0,30=
= (22.86 x (3.35+0.30))+(47.37 x (2.41+0.30))+(
(32.33 x (2.38+0.30))= 298.45 mc

VOLUME TOTALE = 817.6 mc